

# Zeus Mini

---

USER GUIDE



## What's Included



Light Mod



GoPro  
Mount Adaptor



Light  
Diffuser



USB-C  
Cable



Magnetic  
Swivel Clip

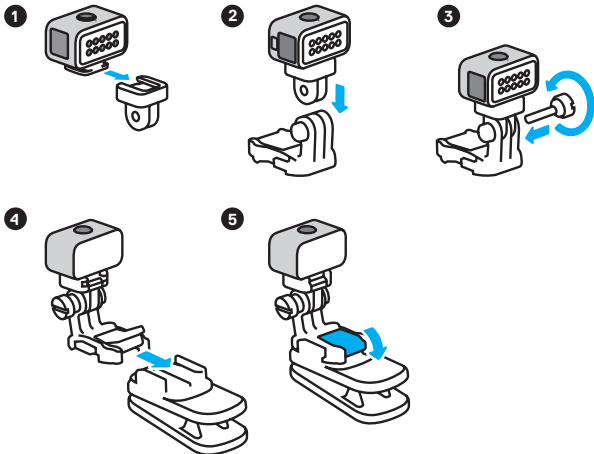


Quick Release  
Buckle



Thumb  
Screw

## Putting It Together



## Using Your Zeus Mini



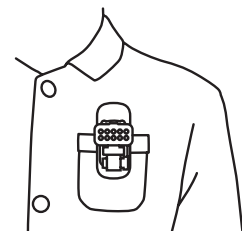
### AIM IT

360° swivel and tilting design lets you choose your lighting angle.



### CLIP IT

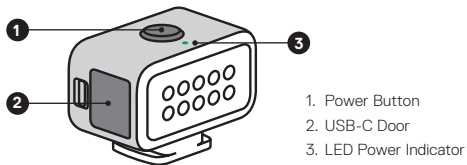
Easily attaches to caps, straps, and more.



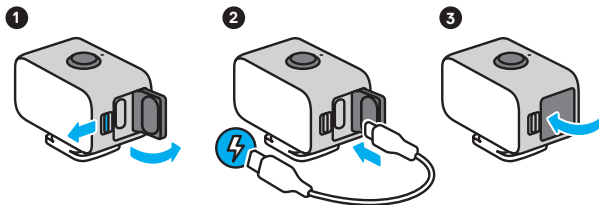
### STICK IT

Built-in magnet to attach it to appliances, anything under the hood, and more.\*  
*\*Do not mount with the magnet to any moving objects.*

## Light Basics

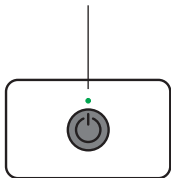


## Charging It Up



**Heads Up:** Be sure that the door is locked and waterproof by firmly pressing it shut after charging.

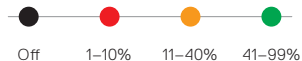
LED Power Indicator



### CHARGING

The LED will pulse green when charging and turn off when the battery is fully charged. It takes about 1.5 hours to fully charge the battery.

### BATTERY LIFE



## Choosing The Brightness



Press to cycle through the three levels of illumination and the strobe.

	Brightness	Battery Life*
Level 1	20 lumens	6 hours
Level 2	60 lumens	2 hours
Level 3	125 lumens 120 lux @1m	1 hour
Strobe		7 hours

\*Battery life may vary based on usage and other external conditions.

### OVERDRIVE

Quickly double press to boost illumination to 200 lumens for 30 seconds.

### POWERING OFF

Press and hold .

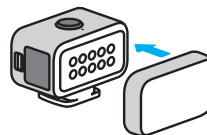
### TECH SPECS

Color temperature without diffuser: 5700K.

Color temperature with diffuser: 5000K.

CRI: 90+

## Attaching The Diffuser



Attach the diffuser to soften the light.

# Zeus Mini

---

MANUEL DE L'UTILISATEUR



## Ce qui est inclus



Module d'éclairage



Adaptateur de fixation GoPro



Diffuseur de lumière



Câble USB-C



Clip pivotant magnétique

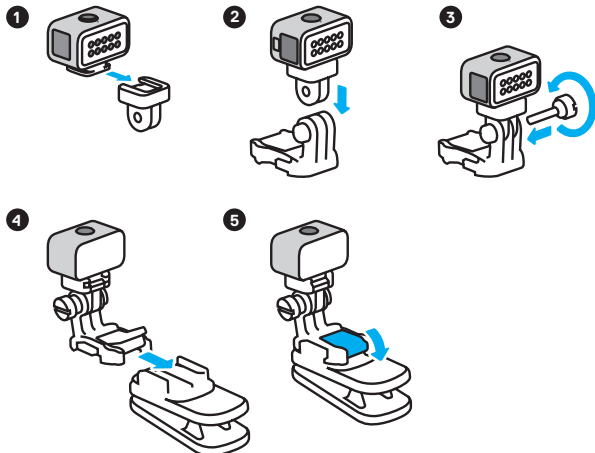


Boucle à dégagement rapide

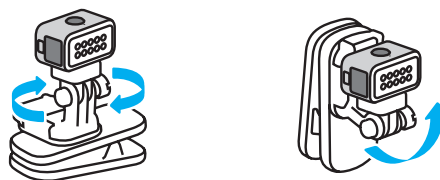


Vis moletée

## Assemblage

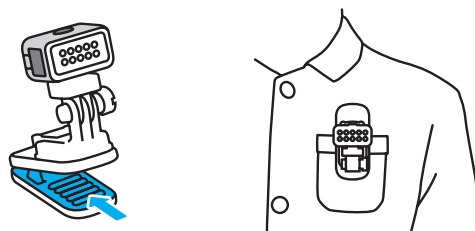


## Utilisation de votre Zeus Mini



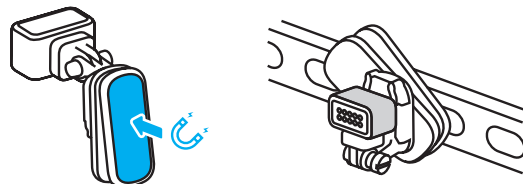
### VISEZ

La conception orientable à 360° vous permet de choisir l'angle d'éclairage optimal.



### FIXEZ

Se clipse facilement sur des chapeaux, sangles, etc.

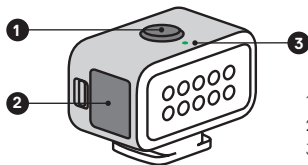


### ATTACHEZ

L'aimant intégré permet la fixation à des appareils, éléments mécaniques, etc.\*

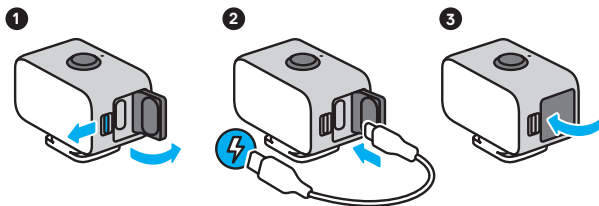
*\*N'utilisez pas l'aimant pour une fixation à un élément mobile.*

## Éléments principaux



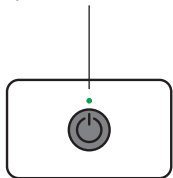
1. Bouton Alimentation
2. Trappe du port USB-C
3. Voyant d'alimentation LED

## Chargement



**Attention :** assurez-vous que la porte est verrouillée et que la fermeture est étanche en appuyant fermement dessus une fois la charge terminée.

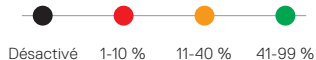
Voyant d'alimentation LED



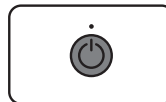
### CHARGEMENT


Le voyant LED clignote en vert lors de la charge et s'éteint lorsque la batterie est complètement chargée. Comptez environ 1,5 heure pour charger la batterie à 100 %.

### AUTONOMIE DE LA BATTERIE



## Choisir la luminosité




Appuyez sur  pour passer en revue les trois options d'éclairage et l'option stroboscope disponibles.


	Luminosité	Autonomie de la batterie*
Niveau 1	20 lumens	6 heures
Niveau 2	60 lumens	2 heures
Niveau 3	125 lumens 120 lux à 1 m	1 heure
Stroboscope		7 heures

\*L'autonomie de la batterie peut varier en fonction de l'utilisation et d'autres conditions externes.

### SATURATION

Appuyez brièvement deux fois de suite sur  pour passer l'éclairage à 200 lumens pendant 30 secondes.

### MISE HORS TENSION

Maintenez enfoncée .

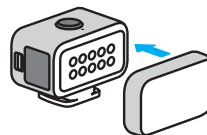
### CARACTÉRISTIQUES TECHNIQUES

Température de couleur sans le diffuseur : 5 700 K.

Température de couleur avec le diffuseur : 5 000 K.

ICR : 90 minimum

## Fixation du diffuseur



Fixez le diffuseur pour profiter d'une lumière plus douce.

# Zeus Mini

---

BENUTZERHANDBUCH



## Im Lieferumfang enthalten



Light Mod



GoPro  
Halterungsadapter



Lichtdiffusor



USB-C-Kabel



Magnetischer  
Drehclip

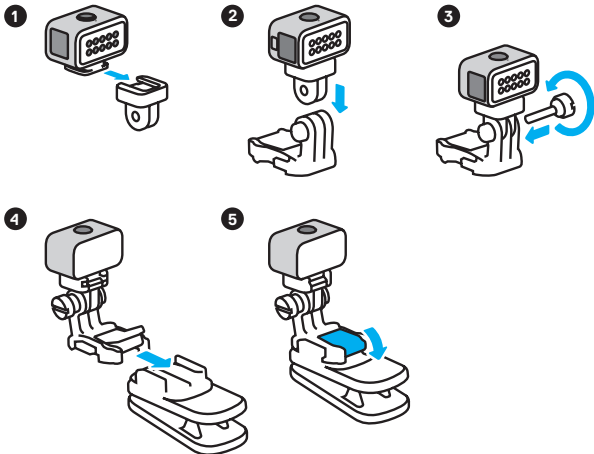


Schnellsteck-  
verschluss



Flügel-  
schraube

## Zusammenbau

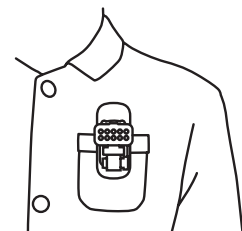


## Verwenden der Zeus Mini



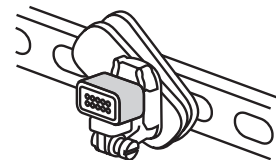
### AUSRICHTEN

Lässt sich neigen und um 360° drehen – für den perfekten Beleuchtungswinkel.



### BEFESTIGEN

Blitzschnelles Ankleben an Mützen, Riemen und mehr.



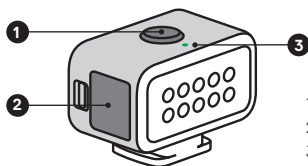
### ANHEFTEN

Integrierter Magnet zur schnellen Befestigung an metallischen Oberflächen, Gegenständen und mehr.\*

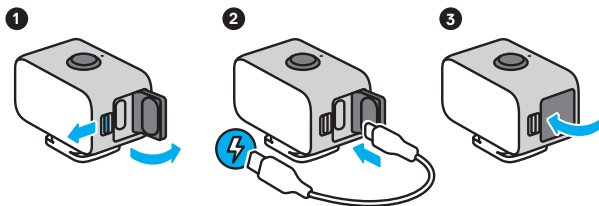
*\*Nicht mit dem Magneten an sich bewegenden Gegenständen befestigen.*



## Basics

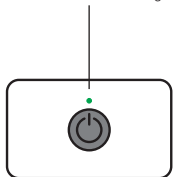


## Aufladen



*Hinweis:* Achte darauf, dass die Klappe verriegelt und wasserdicht ist, indem du sie nach dem Laden fest andrückst.

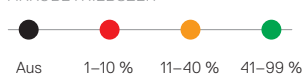
LED-Ladestandanzeige



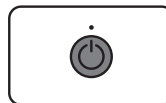
### LADEVORGANG


Die LED-Leuchte blinkt während des Ladevorgangs grün und erlischt, wenn der Akku vollständig geladen ist. Der komplette Ladevorgang dauert ca. 1,5 Stunden.

### AKKUBETRIEBSZEIT



## Helligkeit auswählen

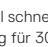


Drücke , um zwischen den drei Beleuchtungsstufen und Strobe zu wechseln.

	Helligkeit	Akkubetriebszeit*
Stufe 1	20 Lumen	6 Stunden
Stufe 2	60 Lumen	2 Stunden
Stufe 3	125 Lumen, 120 Lux auf 1 m	1 Stunde
Strobe		7 Stunden

\*Die Akkulaufzeit kann je nach Verwendung und anderen externen Bedingungen variieren.

### OVERDRIVE

Drücke zweimal schnell auf , um die Beleuchtung für 30 Sekunden auf 200 Lumen zu erhöhen.

### AUSSCHALTEN

Drücke lang auf .

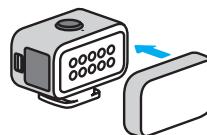
### TECHNISCHE DATEN

Farbtemperatur ohne Diffusor: 5.700K.

Farbtemperatur mit Diffusor: 5.000K.

CRI: 90+

## Befestigen des Diffusors



Verwende den Diffusor für weiches Licht.

# Zeus Mini

---

GUIDA PER L'UTENTE



## In dotazione



Mod per luci



Adattatore per supporti GoPro



Diffusore di luce



Cavo USB-C



Clip girevole magnetica

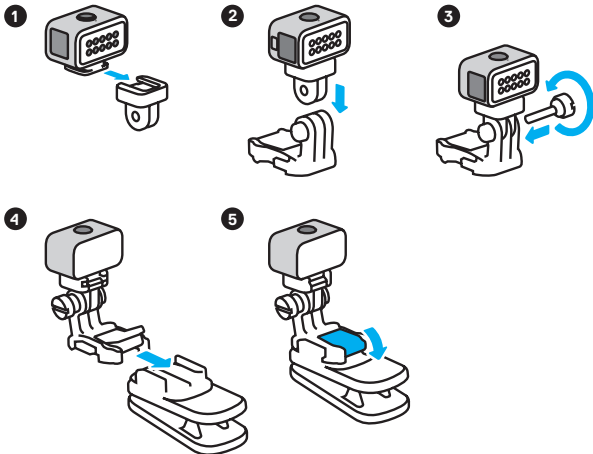


Fibbia a sgancio rapido



Vite di fissaggio

## Montaggio

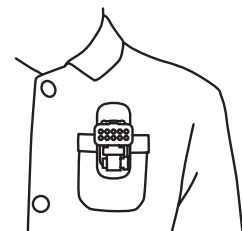


## Utilizzo di Zeus Mini



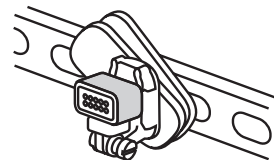
### PUNTALO

Design inclinabile e orientabile a 360° che consente di scegliere l'angolo di illuminazione desiderato.



### AGGANCIALO

Si aggancia facilmente a berretti, cinghie e altro ancora.

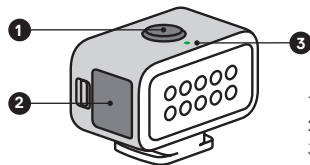


### FISSALO

Magnete integrato per fissarlo a elettrodomestici, a qualsiasi oggetto sotto il cofano e altro ancora.\*

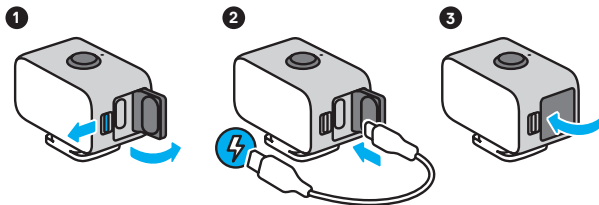
\*Non fissare il magnete a oggetti in movimento.

## Nozioni di base sulle luci



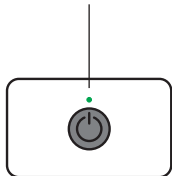
1. Pulsante Accensione
2. Porta USB-C
3. Indicatore di alimentazione a LED

## Ricarica



**Attenzione:** assicurati che lo sportello sia bloccato e impermeabile premendo con decisione per chiuderlo dopo la ricarica.

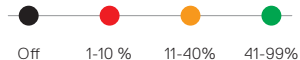
Indicatore di alimentazione a LED



### RICARICA

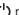
Il LED lampeggia in verde durante la ricarica e si spegne quando la batteria è completamente carica. La ricarica completa della batteria richiede circa 1,5 ore.

### DURATA BATTERIA



## Selezione della luminosità

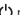


Premi  per selezionare i tre livelli di illuminazione e la luce strobooscopica.

	Luminosità	Durata batteria*
Livello 1	20 lumen	6 ore
Livello 2	60 lumen	2 ore
Livello 3	125 lumen 120 lux a 1 m	1 ora
Strobooscopica		7 ore

\*La durata della batteria può variare in base all'utilizzo e ad altre condizioni esterne.

### OVERDRIVE

Premi rapidamente due volte  per aumentare la luminosità fino a 200 lumen per 30 secondi.

### SPEGNIMENTO

Tieni premuto .

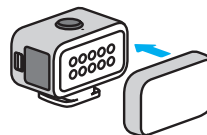
### SPECIFICHE TECNICHE

Temperatura di colore senza diffusore:  
5.700 K.

Temperatura del colore con diffusore:  
5.000 K.

CRI: 90+

## Collegamento del diffusore



Collega il diffusore per attenuare la luce.

# Zeus Mini

---

GEBRUIKERSHANDLEIDING



## Wat zit er in de doos?



Lichtmodule



GoPro bevestigingsadapter



Lichtdiffuser



USB-C-kabel



Magnetische draaiclip

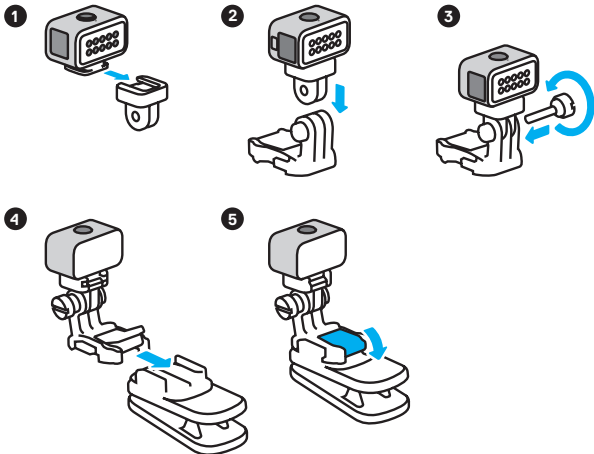


Snelle-ontgrendelingsgesp



Vleugelschroef

## Montage

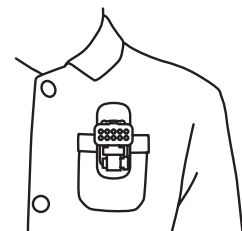


## Je Zeus Mini gebruiken



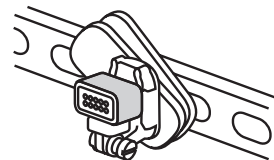
### RICHTEN

Via het 360° draaibare en kantelbare ontwerp kun je lichthoek kiezen.



### VASTKLIKKEN

Klik hem eenvoudig vast aan petjes, riemen en meer.

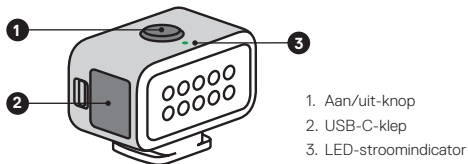


### VASTPLAKKEN

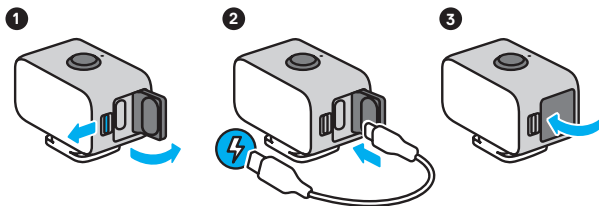
Ingebouwde magneet voor bevestiging aan apparaten, alles binnenin de behuizing en nog veel meer.\*

\*Bevestig hem niet met de magneet op bewegende objecten.

## Basisbeginselen van licht

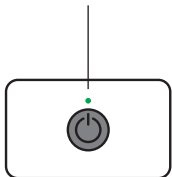


## Opladen



Let op: zorg ervoor dat de klep is vergrendeld en waterdicht is door deze na het opladen stevig dicht te drukken.

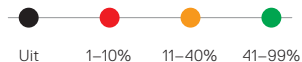
LED-stroomindicator



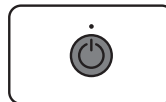
### OPLADEN

Het ledlampje knippert groen tijdens het opladen en gaat uit wanneer de accu volledig is opgeladen. Het duurt ongeveer 1,5 uur om de accu volledig op te laden.

### ACCUDUUR



## De helderheid kiezen



Druk op om tussen de drie verlichtingsniveaus en de stroboscoop te wisselen.

	Helderheid	Accu duur*
Niveau 1	20 lumen	6 uur
Niveau 2	60 lumen	2 uur
Niveau 3	125 lumen 120 lux @1m	1 uur
Stroboscoop		7 uur

\*De accu duur is afhankelijk van het gebruik en andere externe omstandigheden.

### OVERDRIVE

Druk snel twee keer op om de verlichting 30 seconden lang tot 200 lumen te verhogen.

### UITSCHAKELEN

Houd ingedrukt.

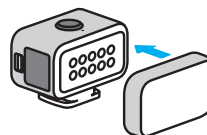
### TECHNISCHE SPECIFICATIES

Kleurtemperatuur zonder diffuser: 5700K.

Kleurtemperatuur met diffuser: 5000K.

CRI: 90+

## De diffuser bevestigen



Bevestig de diffuser om het licht zachter te maken.





Visit **gopro.com** for more information

© 2020 GoPro, Inc. All rights reserved. Light Mod MODEL/MODELO/型號: JBPM1

130-30430-000 REVA